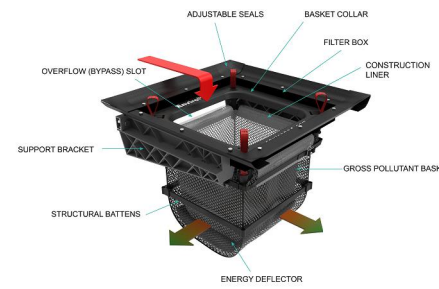
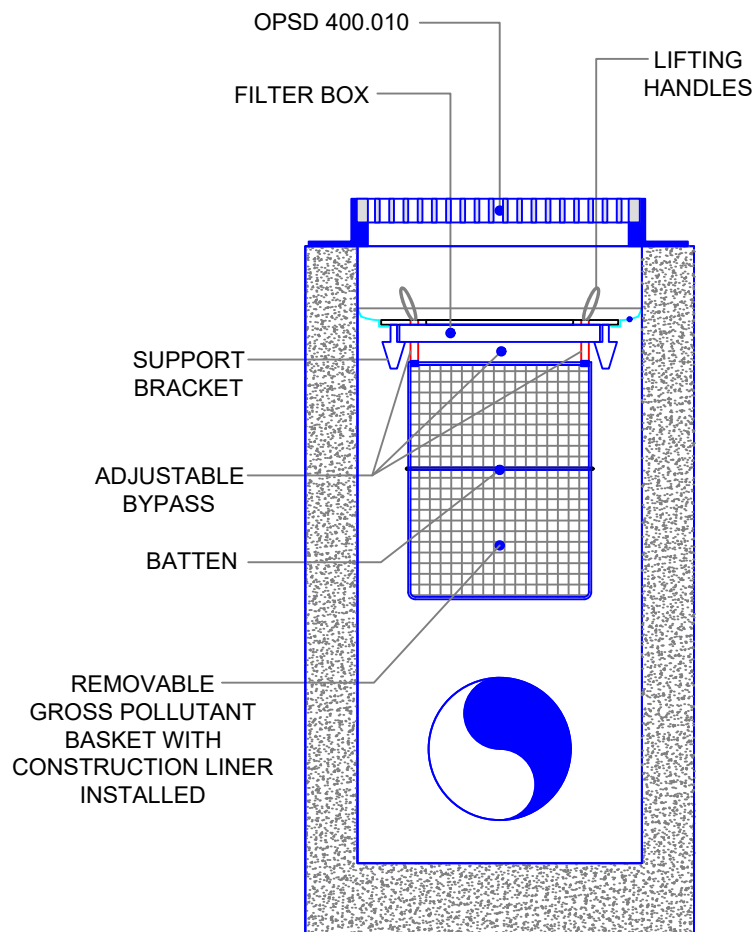
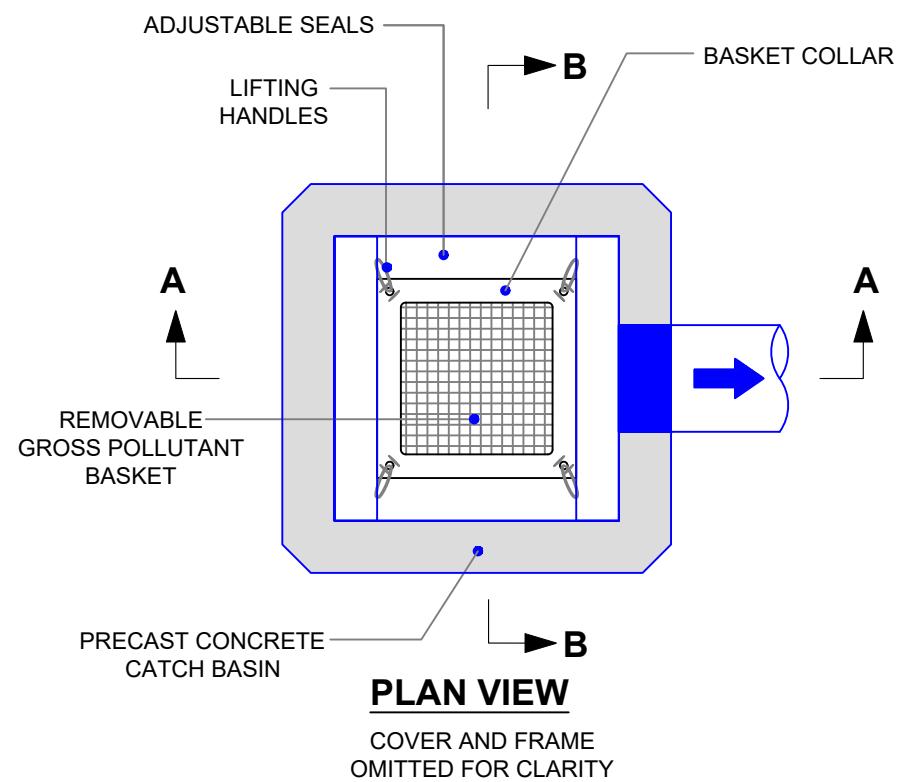


**LittaTrap™ BY ENVIROPOD CANADA LTD**  
**CONTACT : BARRY IRWIN**  
MOBILE : (437) 214-5419  
USA / CANADA : Toll Free : (877) 651-0566  
EMAIL : barryi@enviropod.com  
WEB : www.enviropod.com



- TO USE THE LITTATRAP AS A CONSTRUCTION BMP:**
1. INSTALL LITTATRAP WITH CONSTRUCTION LINER DURING CONSTRUCTION.
  2. CHECK REGULARLY AND REPLACE CONSTRUCTION LINER AS NEEDED
  3. REMOVE CONSTRUCTION LINER WHEN CONSTRUCTION IS FINISHED FOR POST CONSTRUCTION USE.

**INSTALLATION**

- 1 Insert LinerBag**  
Check LittaTrap & LinerBag size match
  - 2 Pull LinerBag flaps through gap**  
Check LinerBag is not stressed in corners and no gaps
  - 3 Clip corners**  
Position strap below corner posts (X). Clip all four corners
- 

<b>ENVIROPOD LittaTrap™ TRASH CAPTURE FLOW AND STORAGE SPECIFICATION</b>					
Catch Basin Nominal Dimensions (mm)	LittaTrap Model Size	Screen Area cm <sup>2</sup>	Maximum Trash Capture Volume (MCTV) (L)	Design Flow Rate 75% MCTV (L/s)	Standard Bypass Flow (L/s)
450 x 450	LT4545	3880	17	42	55
600 x 600	LT6060	6250	43	69	88
900 x 600	LT9060	9500	81	102	124

**Notes:**  
Standard Bypass based on factory set bypass dimensions.  
Other catch basin sizes are possible, please contact us for more detail.  
Flow rates listed are for basket without liner. For liner flow rate and details, refer to the Construction Liner Specification.

THE Enviropod® may be protected by one of the following Canadian, USA or International patent numbers and has other patents pending :  
2,810,974, 13/824,376, 15/459,964, 2011302712, 588049

PATENT No.



ENVIROPOD CANADA  
LITTATRAP WITH CONSTRUCTION LINER  
SPECIFICATION DRAWING

DRG No : **CAN-LT-SPEC-CONST** REV : F DATE : 02/27/25

JOB NO :		REV	REVISION DETAIL	DATE
PROJECT :		B	IMAGE EDITS	07/03/22
		C	TABLE EDITS	10/18/22
		D	CONSTRUCTION	02/14/23
DRN :	R.P.	08/12/21	E	TITLE BLOCK
CKD :	BVL	08/12/21	F	NOTES